

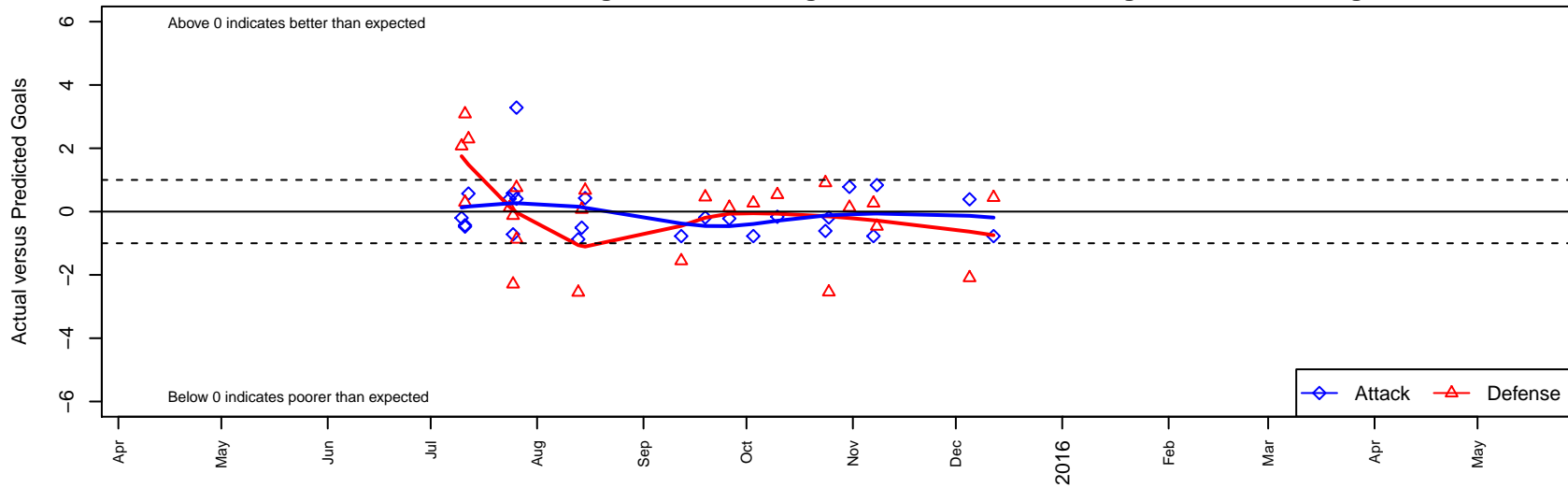
# Crossfire Select Fleming G01

Crossfire Select  
 Redmond, WA  
 G01 total strength=720  
 attack=0.63 defense=0.92  
 fall league = NPSL Div 3 U14

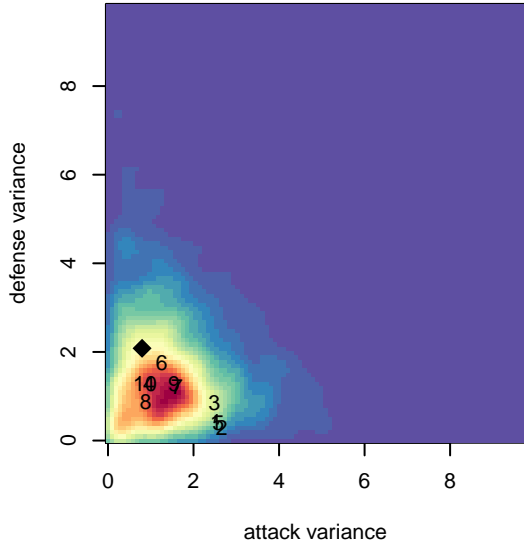
alt names used:  
 Crossfire Fleming G01

Venues played:  
 2015 KCC GU14  
 2015 Crossfire Select GU14 Bronze  
 2015 Bigfoot Group B U14  
 2015 NPSL Division 3 U14

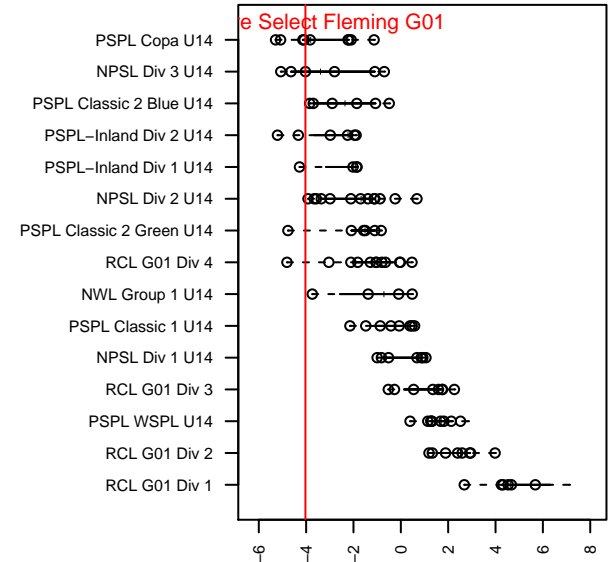
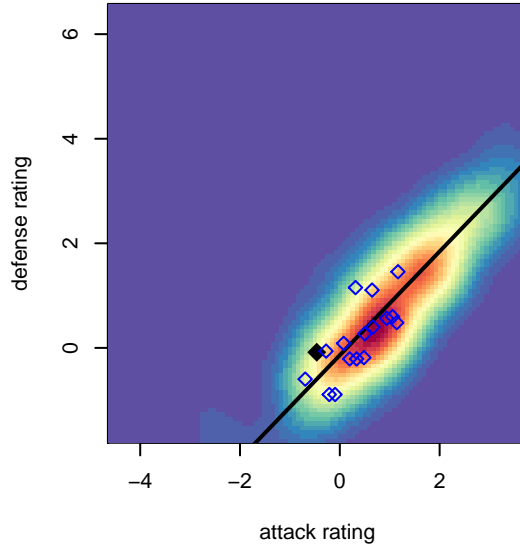
**Crossfire Select Fleming G01**  
 Dots are actual minus expected GF (blue circles) and GA (red triangles).  
 Blue line is smoothed change in attack strength. Red is smoothed change in defense strength.



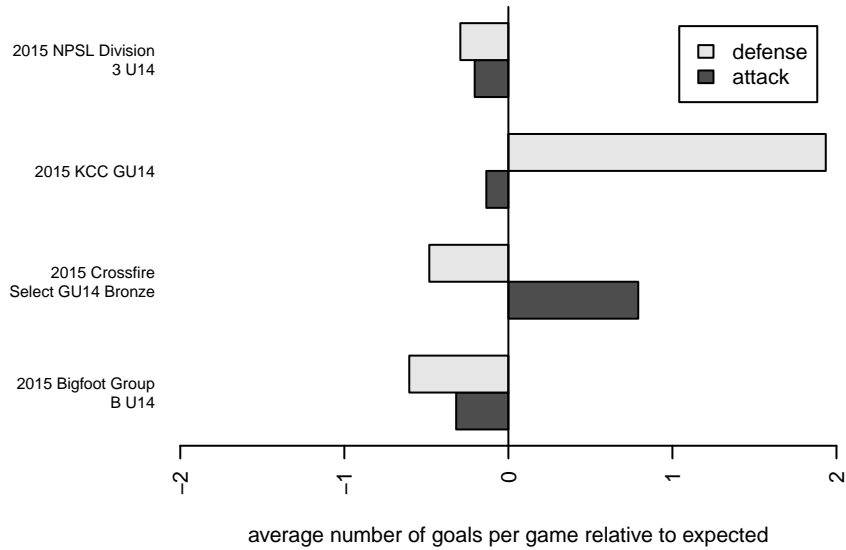
**attack and defense variance (black dot)  
relative to other teams  
and top 10 in region**



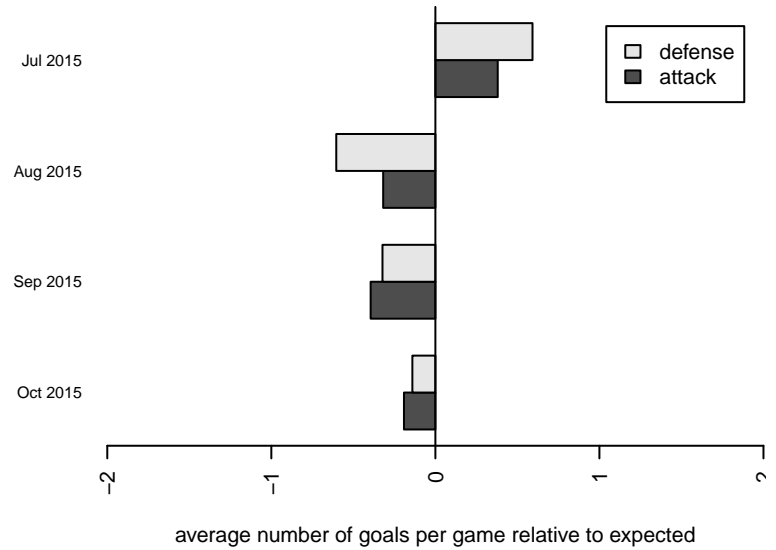
**attack and defense rating  
relative to others at age  
and all opponents in last 13 months**



**Performance relative to 13 month average**



**Performance relative to 13 month average**



date	home		away		venue	pred.home	pred.away
2015-12-12	Granite Falls Thunderbirds G01	1	Crossfire Select Fleming G01	0	2015 NPSL Division 3 U14	1.44	0.78
2015-12-05	Crossfire Select Fleming G01	2	MIFC Hurricane G01	3	2015 NPSL Division 3 U14	1.61	0.91
2015-11-08	Seattle United NE White G01	1	Crossfire Select Fleming G01	2	2015 NPSL Division 3 U14	0.53	1.16
2015-11-07	Crossfire Select Fleming G01	0	Blue Bombers G01	1	2015 NPSL Division 3 U14	0.77	1.27
2015-10-31	Crossfire Select Fleming G01	1	Silver Lake SC Blueberries G01	2	2015 NPSL Division 3 U14	0.22	2.13
2015-10-25	BYSC Select Cambell G01	4	Crossfire Select Fleming G01	0	2015 NPSL Division 3 U14	1.46	0.19
2015-10-24	MIFC Hurricane G01	0	Crossfire Select Fleming G01	1	2015 NPSL Division 3 U14	0.91	1.61
2015-10-10	Crossfire Select Fleming G01	1	Seattle United NE White G01	0	2015 NPSL Division 3 U14	1.16	0.53
2015-10-03	Blue Bombers G01	1	Crossfire Select Fleming G01	0	2015 NPSL Division 3 U14	1.27	0.77
2015-09-26	Silver Lake SC Blueberries G01	2	Crossfire Select Fleming G01	0	2015 NPSL Division 3 U14	2.13	0.22
2015-09-19	Crossfire Select Fleming G01	0	BYSC Select Cambell G01	1	2015 NPSL Division 3 U14	0.19	1.46
2015-09-12	Crossfire Select Fleming G01	0	Granite Falls Thunderbirds G01	3	2015 NPSL Division 3 U14	0.78	1.44
2015-08-15	FC Alliance B G01	1	Crossfire Select Fleming G01	1	2015 Bigfoot Group B U14	1.67	0.57
2015-08-14	Silver FC G01	2	Crossfire Select Fleming G01	0	2015 Bigfoot Group B U14	2.07	0.51
2015-08-13	NWN Blue G01	4	Crossfire Select Fleming G01	0	2015 Bigfoot Group B U14	1.45	0.87
2015-07-26	RV Slammers Navy G01	0	Crossfire Select Fleming G01	5	2015 Crossfire Select GU14 Bronze	0.76	1.72
2015-07-26	Crossfire Select Fleming G01	1	Mukilteo Rush G01	2	2015 Crossfire Select GU14 Bronze	0.59	1.13
2015-07-25	Wenatchee Valley United G01	3	Crossfire Select Fleming G01	1	2015 Crossfire Select GU14 Bronze	2.88	0.42
2015-07-25	Emerald City FC White G01	3	Crossfire Select Fleming G01	0	2015 Crossfire Select GU14 Bronze	0.71	0.72
2015-07-24	Crossfire Select Fleming G01	1	Mukilteo Rush G01	1	2015 Crossfire Select GU14 Bronze	0.59	1.13
2015-07-12	Eastside FC Blue G01	0	Crossfire Select Fleming G01	1	2015 KCC GU14	2.29	0.43
2015-07-11	Eastside FC Blue G01	2	Crossfire Select Fleming G01	0	2015 KCC GU14	2.29	0.43
2015-07-11	Crossfire Select Fleming G01	0	Kent United White G01	0	2015 KCC GU14	0.47	3.08
2015-07-10	Eastside FC White G02	1	Crossfire Select Fleming G01	0	2015 KCC GU14	3.07	0.20